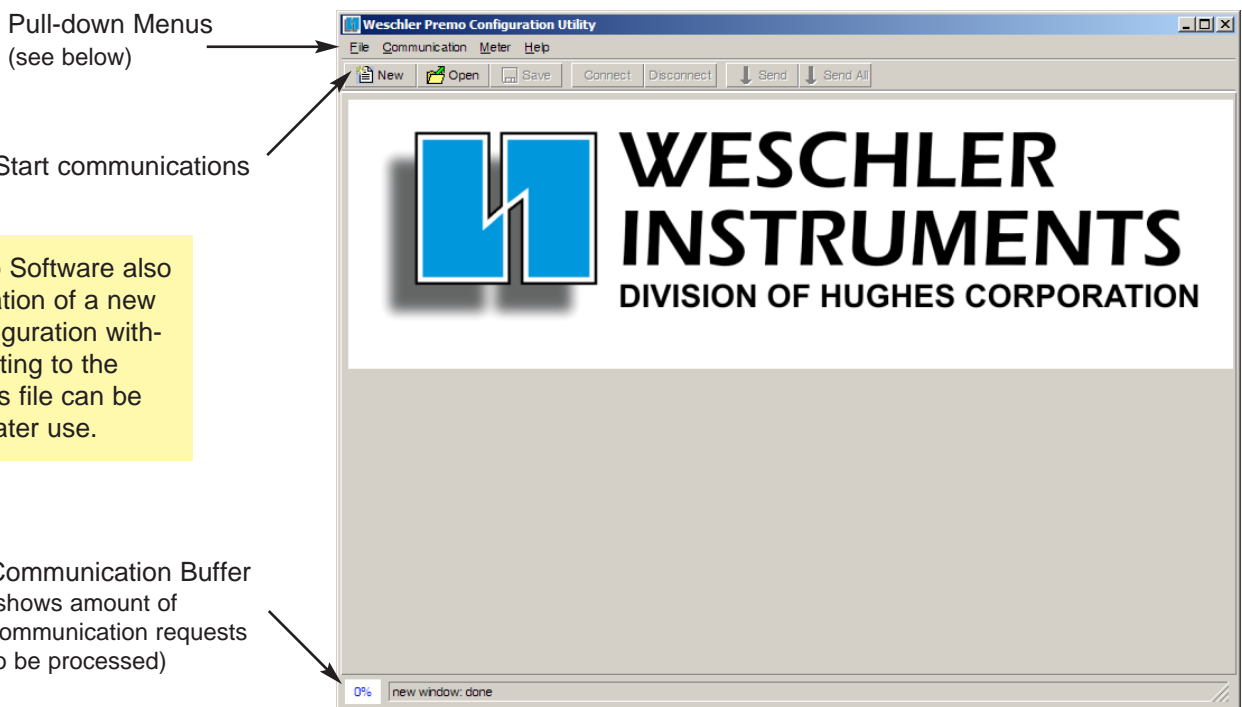


The Premo Configuration Utility is a Windows-based software package for Weschler Premo Bargraph meters. This utility simplifies initial setup on meters with a serial communication port. It can also be used to monitor meter readings and status. The software supports serial and Ethernet communication in either ASCII or Modbus format.

The latest version of the Configuration Utility can be downloaded from the Reference / Software section of the Weschler website. The file is a setup.exe that includes all needed components. During installation, the program adds a "Weschler" entry to the Program List.

To communicate with a Premo meter:

Connect the meter to the appropriate network or PC port (use the PRE/CBL2 cable for RS-232 connection to a PC). Open the software.



File Menu

New

Establish communication with a meter.

Open

Open an existing configuration file.

Import

Add a partial configuration file (typically a macro) to an existing meter configuration.

Save

Save the configuration file (.cfg).

Verbose Output File

A factory debugging aide for macro programming.

Communication Menu

Connect/Disconnect

Send/Send Changes

Send only changes to the meter.

Send All

Send complete configuration.

Connection

Change communication settings to connect to a similar meter.

Meter Menu

Change Meter Comm Settings
Show or modify settings.

Show Changed Parameters
Show registers sent on the Send/Send Changes command.

This document shows ASCII protocol examples. Some parameters are not accessible using Modbus protocol.

Click on the NEW button to set the communication parameters, establish communications and read the existing meter configuration.

Choose Meter Type - Automatic, Premo, Premo M
Automatic will search for type of meter connected. This setting only works for ASCII protocol. Select Premo or Premo M when using Modbus protocol or to create a configuration file without connecting to the meter.

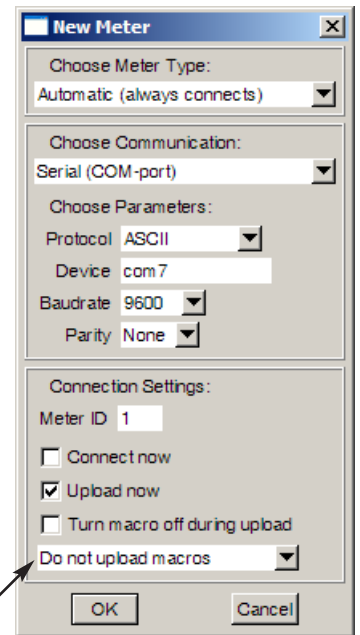
Choose Communications - Serial (Com port) or TCP/IP (Ethernet)*

Choose Parameters (Serial)
Protocol - ASCII or Modbus
Device - PC com port number
Buad rate - set to match meter & PC
Com port (default=9600)
Parity - None, odd, even (default=none)

Choose Parameters (TCP/IP)
Protocol - ASCII or Modbus/TCP
IP Address - (see meter nameplate)
Port - set to 10001

Connection Settings

Meter ID - bus address of the Premo
Connect Now - Connect & upload only meter type info
Upload Now - Upload complete meter setup to the PC
Turn Macro Off During Upload - stops macro execution momentarily



Special macro instructions (for Premo M meters only)

*Passive TCP/IP setting is for factory use only.

When communication starts, the Display screen opens and the Communication Buffer counts down to 0% as the meter parameters are read. A quick way to verify communication is to move the brightness slider bar. The change will be immediately visible on the meter.

This software allows access to many parameters, including some that are not front panel accessible. Save the existing meter configuration before making changes.

The other setup screens are accessible from buttons on the left of the main screen.

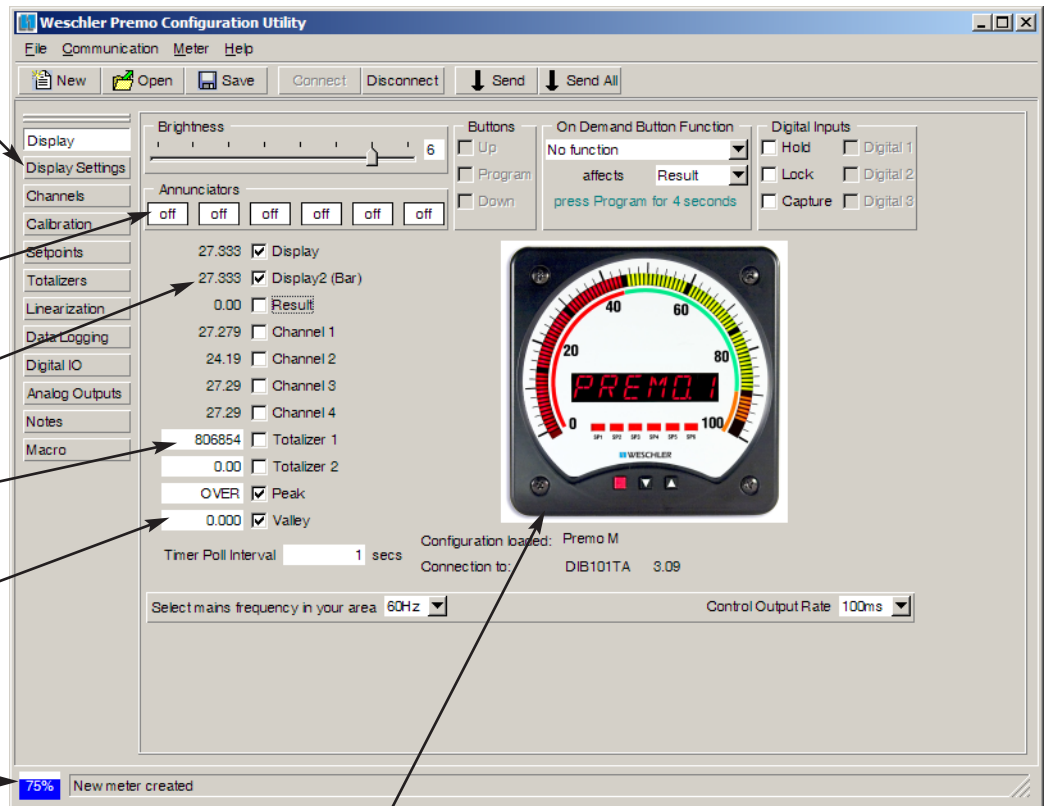
Setpoint annunciator status (SP1 is on the left)

Shows value when communication established. Check to continually update.

To reset Totalizers, enter 0 here or on Totalizers screen.

To reset Peak & Valley, enter the present value of the Peak/Valley Source (normally the Display) selected in the Display Settings screen.

The heartbeat indicates the communication channel is open.



Meter image is just a typical front panel representation. It does not show the actual display.

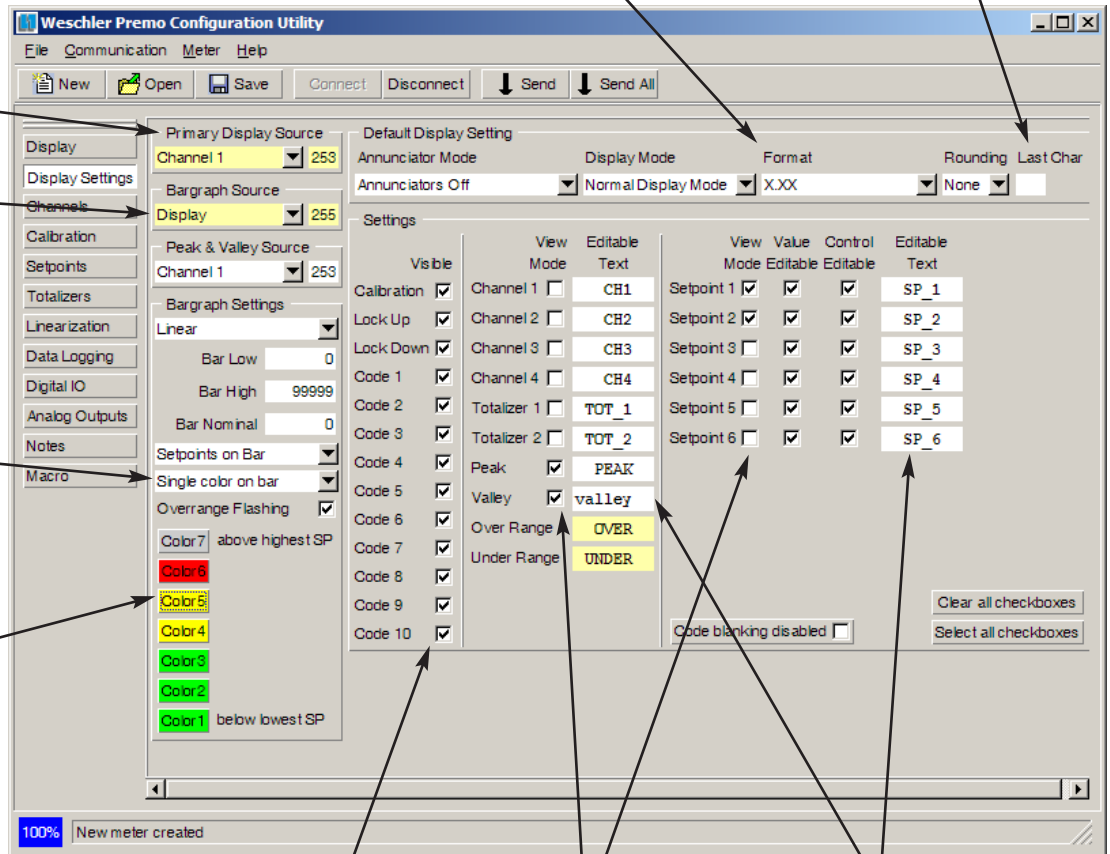
Set decimal position. Fixed last character, alpha or numeric.

Select source for the digital display.

Select source from pull-down or enter register number. (ASCII & Modbus register numbers are listed in the Premo Registers Supplement).

For tricolor bar: Select single color mode (entire bar changes color) or banded mode (only section between set-points changes color).

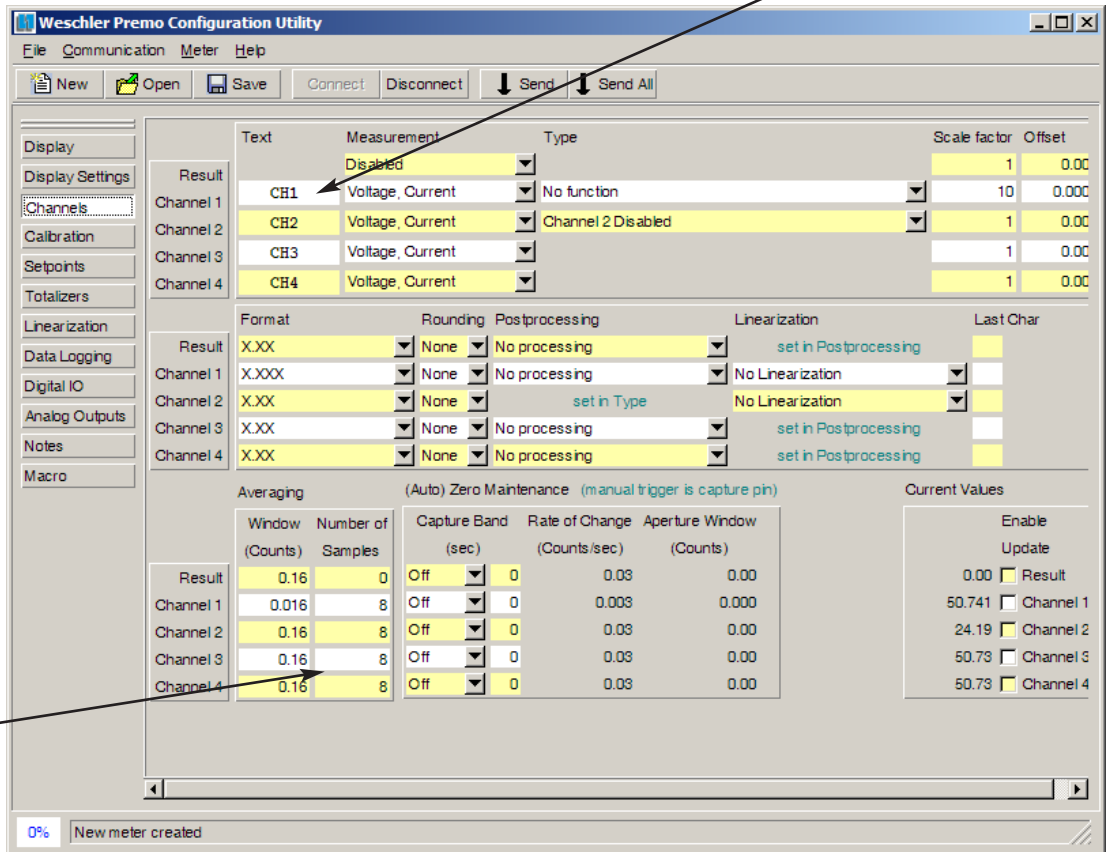
For tricolor bar: Select bar color between setpoints (Grey is bar off).



Check to show item in front panel program mode.

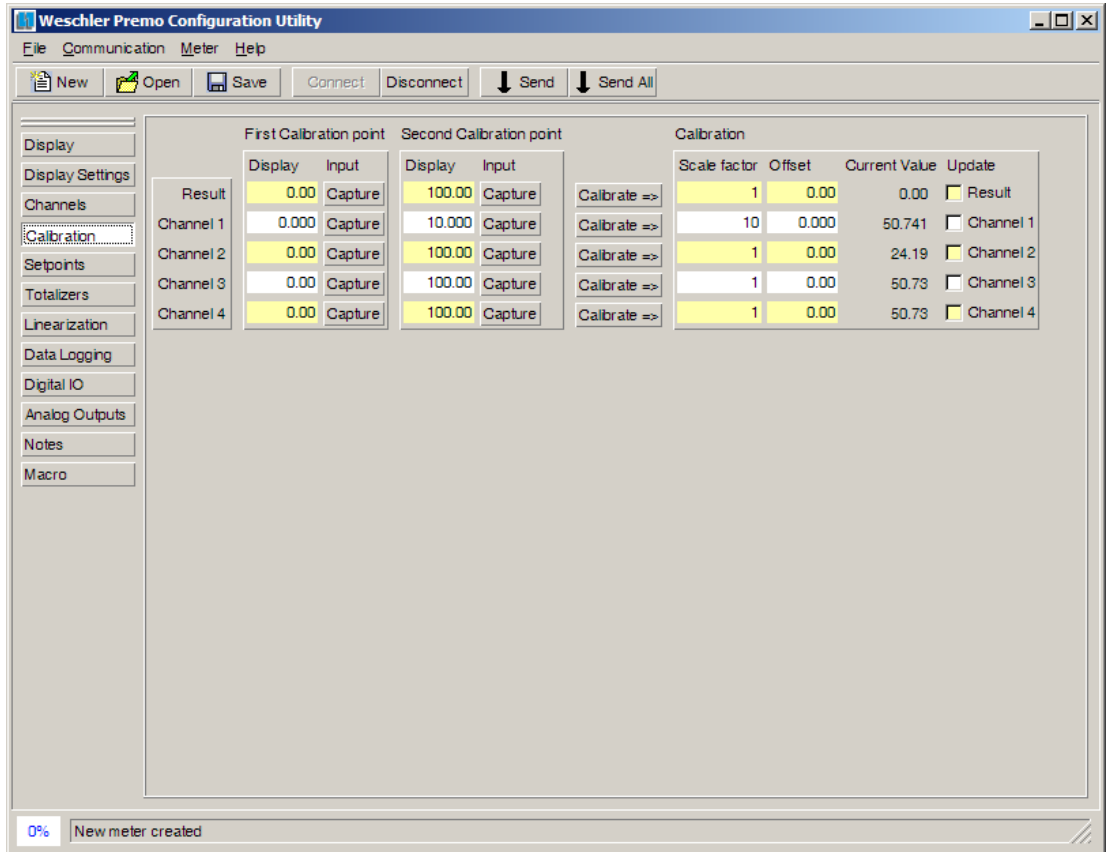
Check to show item in front panel view mode (up & down buttons).

Enter custom title, up to 6 characters (e.g. ALARM 1).



Number of samples to average when signal is within window.

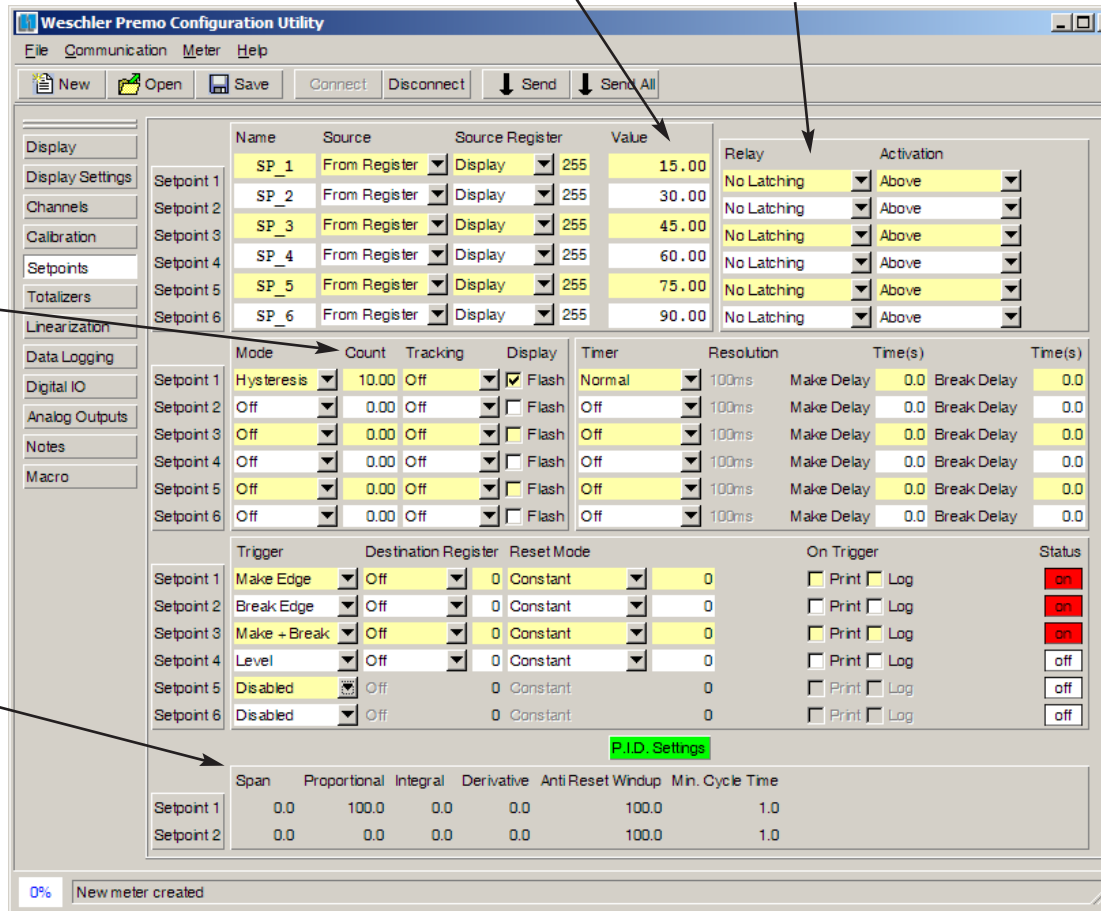
Meters are factory scaled and calibrated as indicated on the label. See manual before recalibrating.



Enter setpoint value, including decimal position.

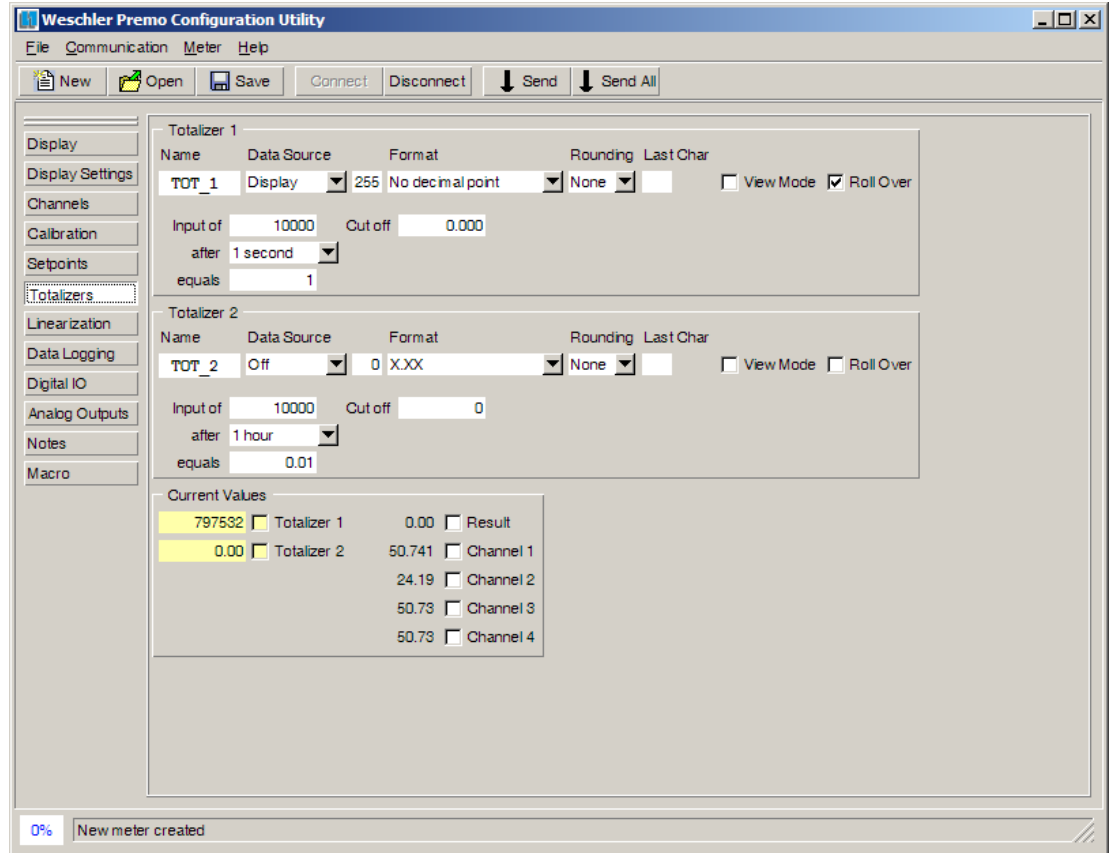
Six relays show regardless of the number actually installed in the connected meter.

Enter hysteresis or deviation value in counts.



This section only active when mode for SP1 or SP2 is PID.

This screen sets the configuration of the totalizer (counter) channels available with certain input modules.



Four tables available on Premo M. Standard Premo has Table 1 only.

Only consecutive tables can be saved.

Right click menu for entered data point:

Fill Down

Use input/output values of current line for the rest of the table.

Reset

Return entire table to factory default values (as shown in table 1).

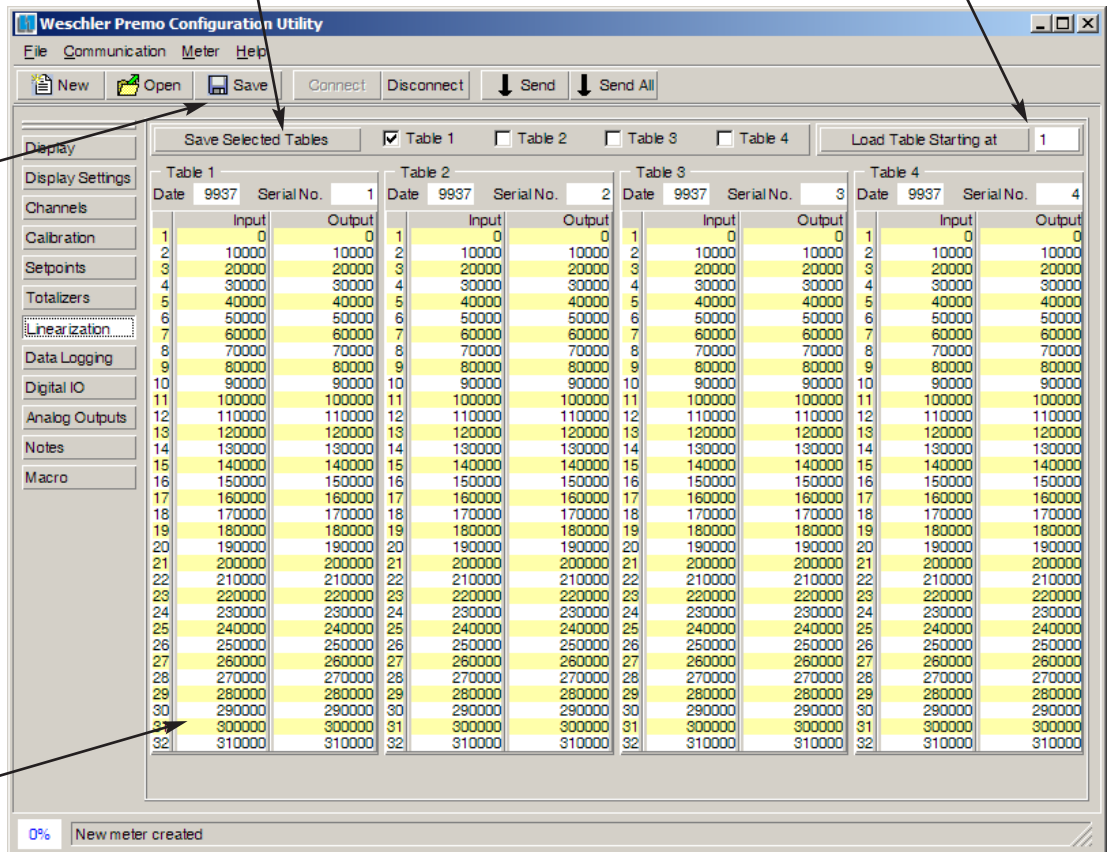
Sort

Arrange input values in ascending order (table must be monotonic increasing or decreasing).

Reset (factory default) values.

Saves table values in .csv file.

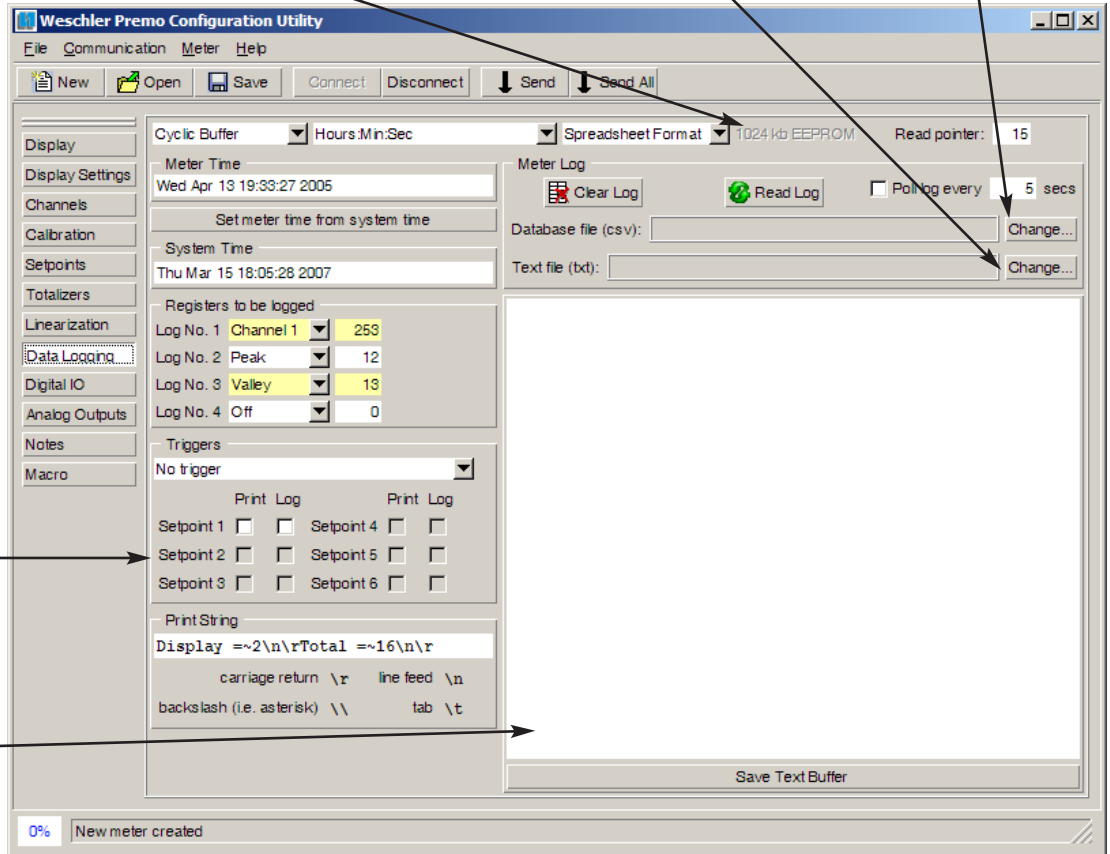
Load tables consecutively from a .csv file, starting with table #...



Memory available for datalogging.

Save data as it is sent from meter on Read Log.

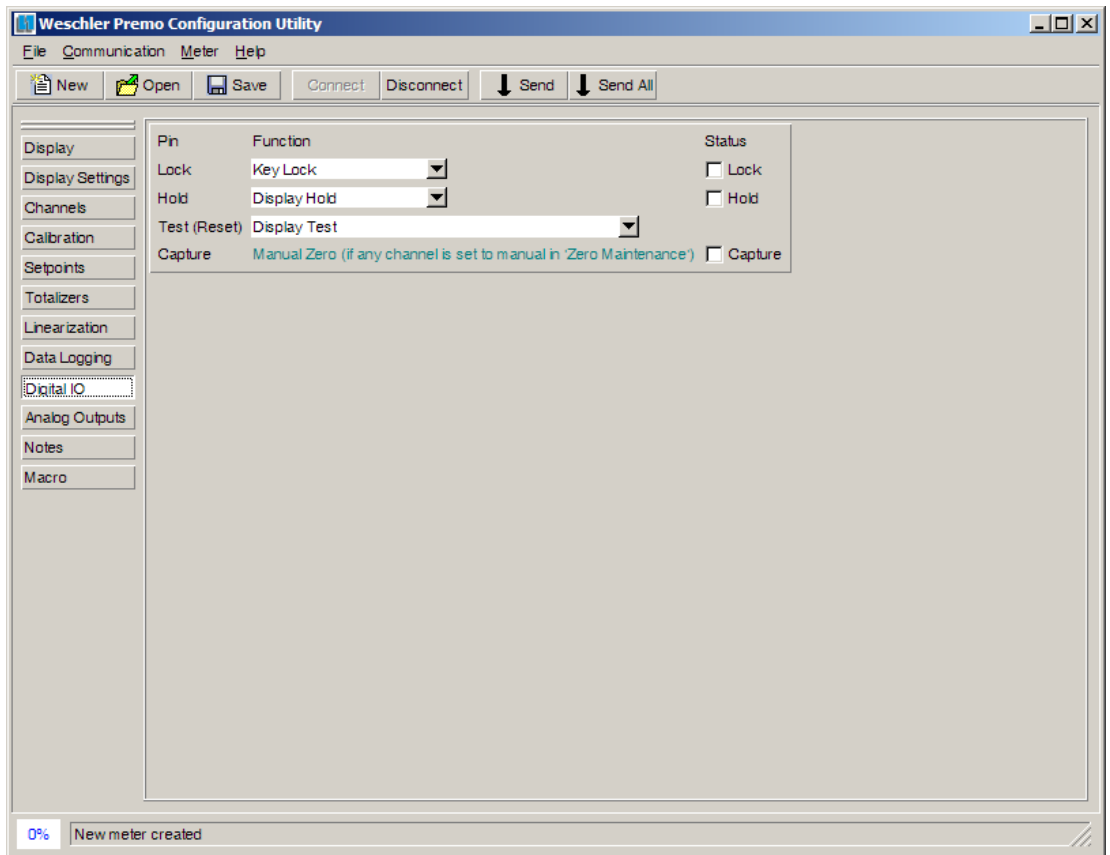
Save data in CSV format on Read Log.



Only available if set-point is selected as trigger on setpoints page.

Text buffer shows up to 64kB of data (only available in ASCII mode).

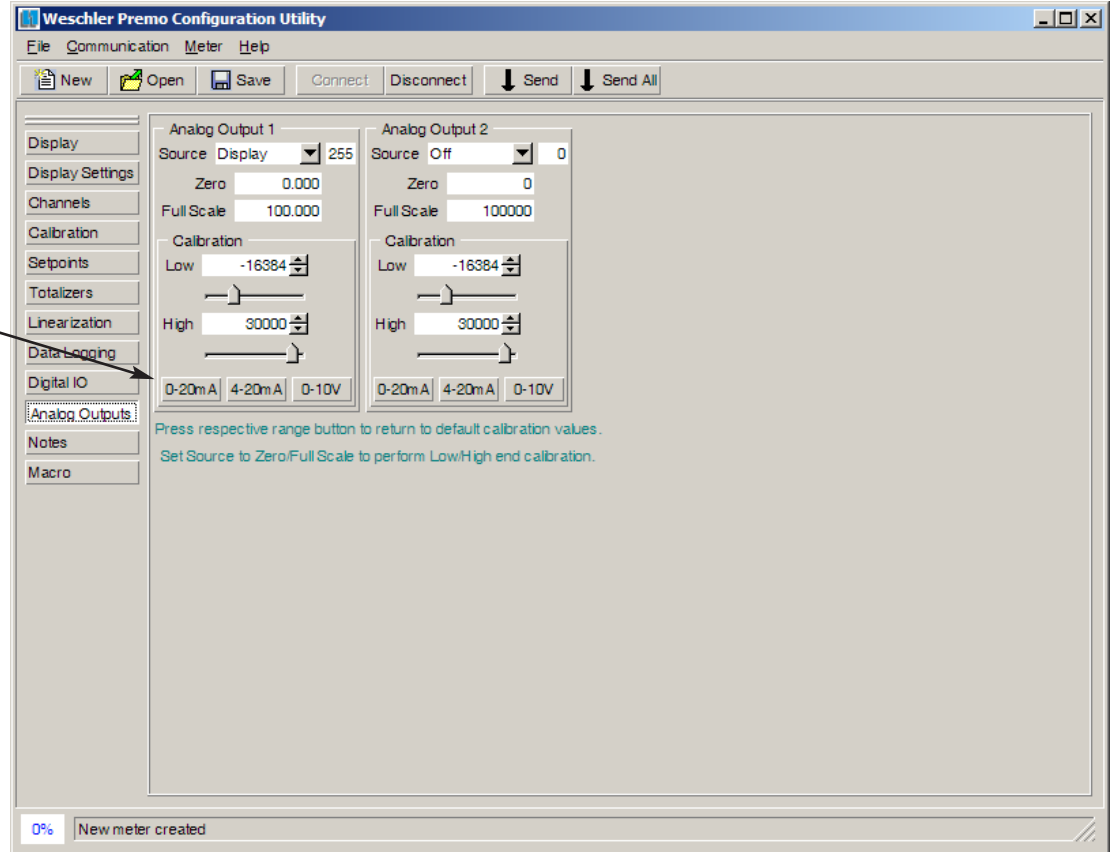
This screen sets the operation of the signals on the function connector.



This screen is active even if an analog output option is not installed in the meter.

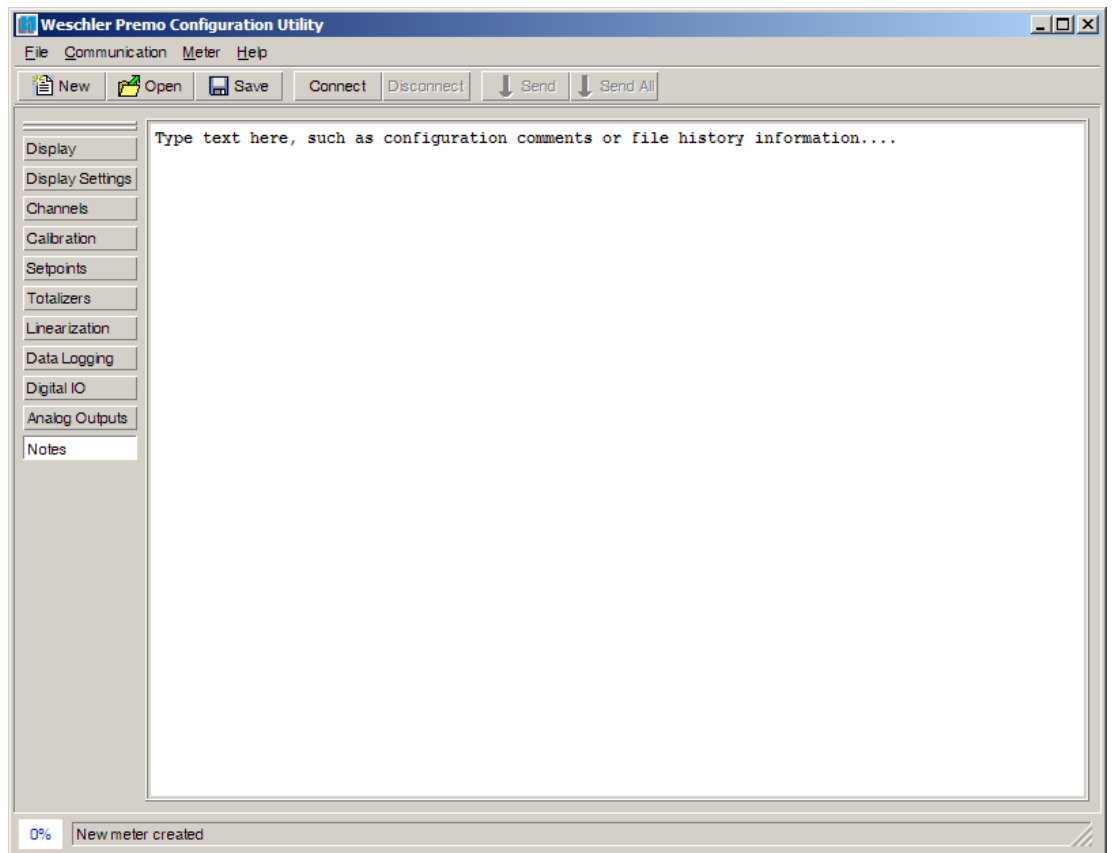
Change from mA to Volts output requires moving jumper inside meter.

Default calibration values are approximate. For rated accuracy, calibration must be performed on each channel.



Allows entry of text (up to 64kB) to be saved with the configuration file.

This info is not sent to the meter.



This screen appears on Premo M only.

The Premo Configuration Utility can be used to load a macro file, but not create it. Macros must be factory constructed and compiled. Compiled macro files have a .cmp file suffix.

Indicates which macros are implemented.

Starts & stops macro execution.

