

LFE/API Analog Panel Meters

Replacements for popular styles and sizes

7000 Series

Phenolic case, glass window

2 1/2"	7025
3 1/2"	7035
4 1/2"	7045
5 1/2"	7055



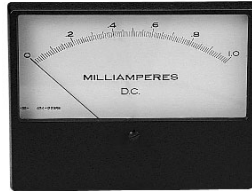
Panelist Series

Black phenolic case, glass window

3 1/2"	303
4 1/2"	503
5 1/2"	603

Clear plastic case & window

2 1/2"	202
3 1/2"	302
4 1/2"	502
5 1/2"	602



Round Series

Polycarbonate case, plastic or glass window

3 1/2"	1235
--------	------



Meteor Series

Plastic window & case

2 1/2"	204
3 1/2"	304
4 1/2"	504
5 1/2"	604



Edgewise Series

Plastic window & case

1 1/2"	1015
2 1/2"	1025
3 1/2"	1035
3 1/2" shielded	371



Ruggedized Series

Sealed metal case

2 1/2"	255
3 1/2"	355
4 1/2"	455



See more info online at weschler.com/LFE

ANALOG METERS

A&M Ruggedized Panel Meters

- Steel Case, Glass Window
- Watertight
- Magnetic Shielding (90° models)
- Mounting per Mil-M-10304E



90° ▲



250° ▲

Accuracy 90°:	2% DC & Iron Vane, 3% Rectifier Type
250°:	1% DC, 2% Rectifier Type

To order: specify model, input & scale

Style/Size	Model	Type
90° Round		
2 1/2"	263	AC Rectifier Type
	264	RF Core Magnet
	265	DC Core Magnet
	266	AC Iron Vane
3 1/2"	363	AC Rectifier Type
	364	RF Core Magnet
	365	DC Core Magnet
	366	AC Iron Vane
90° Square		
1 1/2"	133	AC Rectifier Type
	135	DC Core Magnet
2 1/2"	233	AC Rectifier Type
	235	DC Core Magnet
	236	AC Iron Vane
250° Round		
2 1/2"	2432	AC Rectifier Type
	2452	RF Core Magnet
3 1/2"	3432	AC Rectifier Type
	3452	DC Self-shielding
4 1/2"	443	AC Rectifier Type
	445	DC Self-shielding